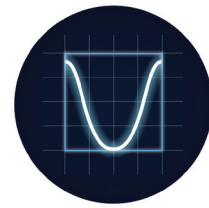


UPS SYSTEMS:

ES10W

EMERGENCY KIT FOR 230Vac LAMPS UP TO 10W

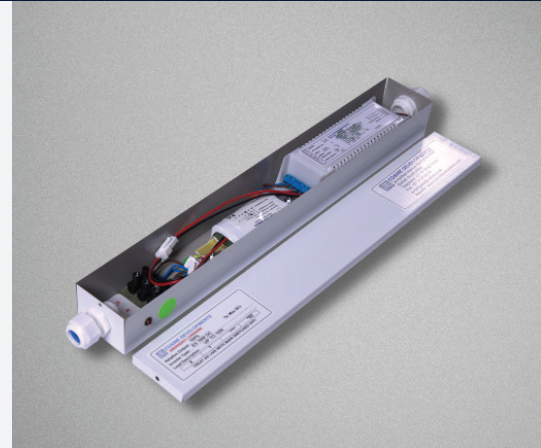


COSINE DEVELOPMENTS
LEADERS IN EMERGENCY LIGHTING

DESCRIPTION

The ES-10W supplies 100% light output in emergency operation for most 230V LED or ES lamps up to 10W.

Please note, the lamp must be specified prior to ordering this product to confirm it's compatibility with the load-active circuitry that varies from each brand, which could interfere with this emergency product. The battery provides the power to the unit during emergency mode. A safety start circuit is provided that prevents emergency operation until mains is connected – this enables installation without disconnecting or depleting the batteries.



TECHNICAL DATA

BATTERY DISCHARGE CURRENT	up to 2A
BATTERY TYPE	7.2V Ni-Cad 7.4V Li-ion
CHARGING CURRENT	200mA
CHARGING INDICATION	Provided
INVERTER DIMENSIONS	170 x 45 x 35mm
REMOTE BOX DIMENSIONS	400 X 54 X 43mm
EMERGENCY LIGHTING DURATION	1 hour - 3 hours
LAMP TYPE	Certain ES or LED lamps up to 10W
MAINS POWER CONSUMPTION	10VA
MAINS VOLTAGE	100 - 253VAC 50/60Hz
MAXIMUM AMBIENT TEMPERATURE	+70°C

FEATURES

- > Emergency kit for 230Vac lamps up to 10W
- > 45 minutes to 3 hours emergency duration
- > 5 year warranty on inverter



A pilot light indicates that the mains is present. The unit is housed in a self-extinguishing polycarbonate case, which includes a label of the wiring connection diagram. This unit can be supplied in a remote box as per customer requirement.

The batteries that are compatible with this unit are the 6x2 Ahr nickel cadmium and also compatible with 7.4V lithium-ion battery.