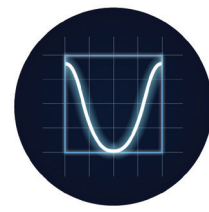


OCCUPANCY SENSOR:

CD-IR-HS

HIGH SENSITIVITY INFRA-RED SENSOR

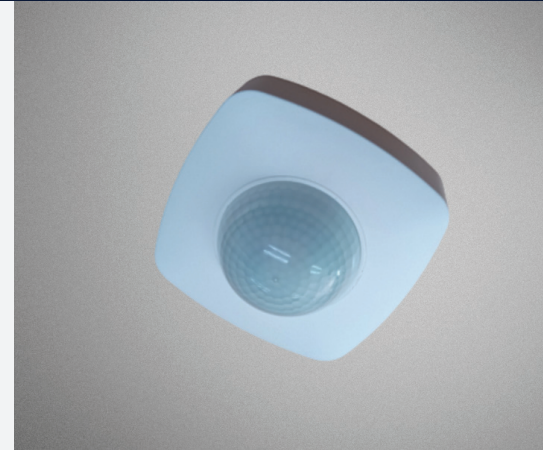


COSINE DEVELOPMENTS
LEADERS IN EMERGENCY LIGHTING

DESCRIPTION

The CD-IR-HS infra-red motion sensor is a highly sensitive surface mount device. The sensor has a high load rating, as well as a wide detection range.

The sensor has multiple detection zones that can pick up the slightest of movements and, with its huge time delay capabilities, the CD-IR-HS stands above most infra-red sensors.



TECHNICAL DATA

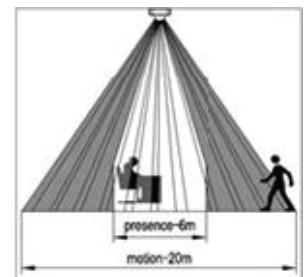
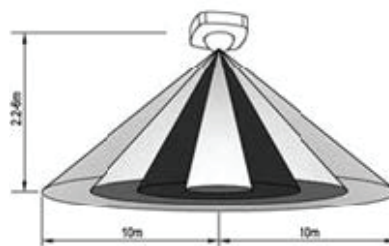
DAY LIGHT LUX SENSING CONTROL	10 - 2000 Lux
DETECTION ANGLE	360°
DETECTION RANGE	2 - 20m
INSTALLATION HEIGHT	2 - 6m
MAINS VOLTAGE	220 - 253Vac 50/60Hz
MAXIMUM AMBIENT TEMPERATURE	+70°C
RATED LOAD	Incandescent: up to 2000W LED: 1000W
IP RATING	IP54

FEATURES

- > +/- 10 second to 30 minutes time delay
- > 10m radius detection range
- > 2 - 6 meter height installation
- > 2000W load rating

The sensor has 3 settings:

- > Time delay: 10 seconds - 30 minutes
- > Sensitivity: 2 - 20m diameter
- > Lux: 10 - 2000 lux



The lux setting allows you to choose at what light levels you want the occupancy sensor to function. The CD-IR-HS can detect night and day, it can be adjusted to max (sun) where the sensor will detect at any light level or you may adjust the light levels for detection as desired by adjusting the "lux" knob.