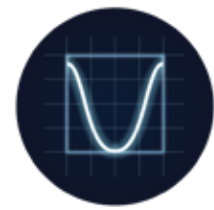


## UPS SYSTEMS:

# ES100W

UPS SYSTEM FOR 230Vac DEVICE OR LAMPS UP TO 100W

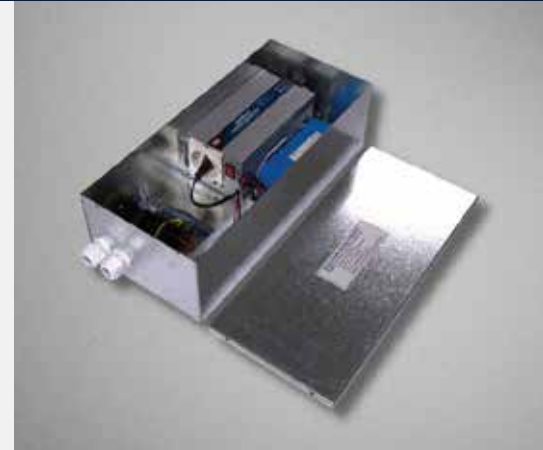


**COSINE DEVELOPMENTS**  
LEADERS IN LIGHTING TECHNOLOGY

## DESCRIPTION

The ES-100W supplies 100% light output in emergency operation for most 230V LED or ES lamps up to 100W.

Please note, the lamp must be specified prior to ordering this product to confirm it's compatibility with the load – active circuitry varies from each brand, which could interfere with this emergency product. A safety start circuit is provided that prevents emergency operation until mains is connected – this enables installation without disconnecting or depleting the batteries.



## TECHNICAL DATA

<b>BATTERY DISCHARGE CURRENT</b>	5A
<b>BATTERY TYPE</b>	24V lead-acid   25.9V Li-ion
<b>CHARGING CURRENT</b>	>550mA
<b>CHARGING INDICATION</b>	Provided
<b>EMERGENCY LIGHTING DURATION</b>	1 hour
<b>EMERGENCY LIGHT OUTPUT</b>	100%
<b>LAMP TYPE</b>	any loads up to 100W
<b>MAINS POWER CONSUMPTION</b>	10VA
<b>MAINS VOLTAGE</b>	100 – 253Vac 50/60Hz
<b>MAXIMUM AMBIENT TEMPERATURE</b>	+70°C
<b>REMOTE BOX DIMENSIONS</b>	360 x 165 x 110mm

## FEATURES

- > 1 hour emergency duration
- > 100% emergency light output
- > Suitable for LED Hi-Bays and LED Floods
- > 5 year warranty on inverter

Discharge currents may vary depending on lamp brands used.

The batteries that are used with this unit are 2x12V 9Ahr Lead acid batteries or 25.9V Li-ion. The batteries that may be used with this unit are any 24V lead acid battery or 20x4Ahr Ni-Cad battery or 25.9V Li-ion.

