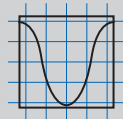
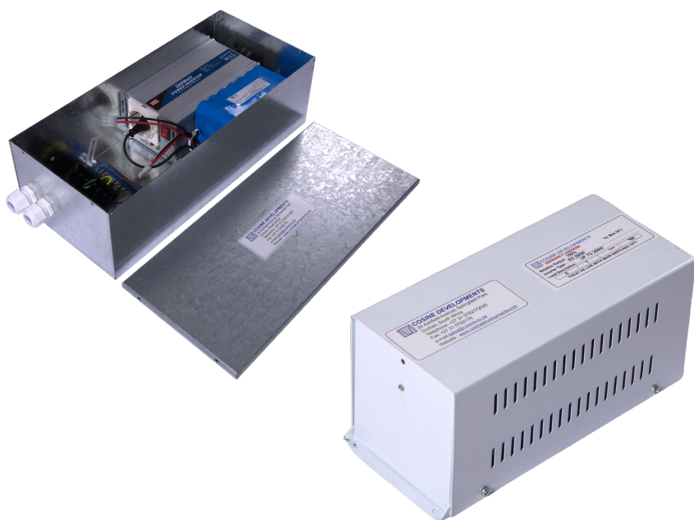


ES150W | ES200W PACK

UPS SYSTEM FOR ANY 230VAC DEVICE OR LAMPS
UP TO 150W | 200W



COSINE DEVELOPMENTS
LEADERS IN LIGHTING TECHNOLOGY



OVERVIEW:

- > Emergency power for 230 Vac 150W|200W device/lamps
- > 1 hour emergency duration
- > 100% emergency light output
- > Perfectly suitable for LED Hi-Bays / LED Floods
- > 5 year warranty on inverter

PRODUCT DESCRIPTION:

The ES-150W | 200W supplies 100% light output in emergency operation for most 230V LED or ES lamps up to 150W | 200W. Please note, the lamp must be specified prior to ordering this product to confirm it's compatibility with the load - active circuitry varies from each brand, which could interfere with this emergency product.

A safety start circuit is provided that prevents emergency operation until mains is connected - this enables installation without disconnecting or depleting the batteries. The unit is housed in an alu-zinc case.

The batteries that must be used with this unit are 2x12V 12Ahr Lead acid batteries or 29.9V Lithium-ion.

SPECIFICATIONS	
Battery Discharge Current	8A for ES150W 10A for the ES200W
Battery Type	24V lead-acid, 29.9 Li-ion
Charging Current	>550mA
Charging Indication	Provided
Dimensions: Unit (L x W x H)	340 x 100 x 43mm
Emergency Lighting Duration	1 hour
Emergency Light Output	100%
Lamp Type	Any loads up to 150W for ES150W Any loads up to 200W fo ES200W
Mains Power Consumption	10VA
Mains Voltage	100 - 253Vac 50/60Hz
Maximum Ambient Temperature	+70°C
Plug & Play Dimensions (L x W x H)	AC (silver): 360 x 165 x 110mm DC (white): 260 x 110 x 115mm

*Discharge currents may vary depending on lamp brands used.