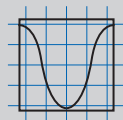
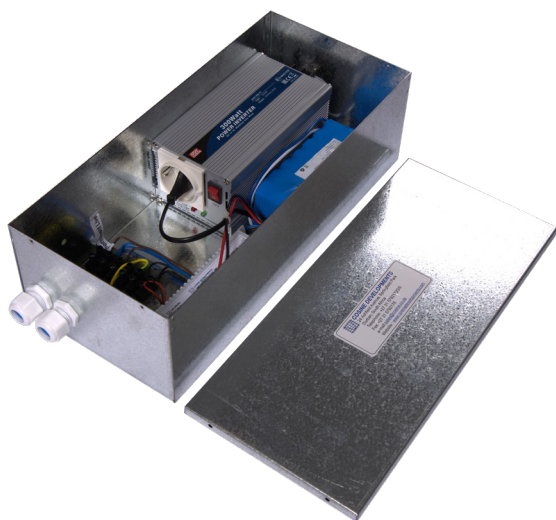


# ES100W | ES125W PACK

UPS SYSTEM FOR ANY 230VAC DEVICE OR LAMPS  
UP TO 100W | 125W



**COSINE DEVELOPMENTS**  
LEADERS IN LIGHTING TECHNOLOGY

## OVERVIEW:

- > Emergency power for 230 Vac 100W|125W device/lamps
- > 1 hour emergency duration
- > 100% emergency light output
- > Perfectly suitable for LED Hi-Bays / LED Floods
- > 5 year warranty on inverter

## PRODUCT DESCRIPTION:

The ES-100W | 125W supplies 100% light output in emergency operation for most 230V LED or ES lamps up to 100W | 125W. Please note, the lamp must be specified prior to ordering this product to confirm it's compatibility with the load - active circuitry varies from each brand, which could interfere with this emergency product. A safety start circuit is provided that prevents emergency operation until mains is connected - this enables installation without disconnecting or depleting the batteries. The unit is housed in an alu-zinc case.

The batteries that are used with this unit are 2x12V 9Ahr Lead acid batteries or 25.9V Li-ion. The batteries that may be used with this unit are any 24V lead acid battery or 20x4Ahr Ni-Cad battery or 25.9V Li-ion. Please Note, it is recommended to use 2 x 12V lead acid batteries in series.

SPECIFICATIONS	
<b>Battery Discharge Current</b>	5A for the ES100W 6.5A for the ES125W
<b>Battery Type</b>	24V lead-acid, 25.9 Li-ion
<b>Charging Current</b>	> 550mA
<b>Charging Indication</b>	Provided
<b>Dimensions: Unit</b> (L x W x H)	340 x 100 x 43mm
<b>Emergency Lighting Duration</b>	1 hour
<b>Emergency Light Output</b>	100%
<b>Lamp Type</b>	Any loads up to 100W for ES100W Any loads up to 125W for ES125W
<b>Mains Power Consumption</b>	10VA
<b>Mains Voltage</b>	100 - 253Vac 50/60Hz
<b>Maximum Ambient Temperature</b>	+70°C
<b>Plug &amp; Play Dimensions</b> (L x W x H)	360 x 165 x 110mm
<b>Weight</b>	6.6kg

\*Discharge currents may vary depending on lamp brands used.